

Instructions for fitting the GEO PIC 1.0

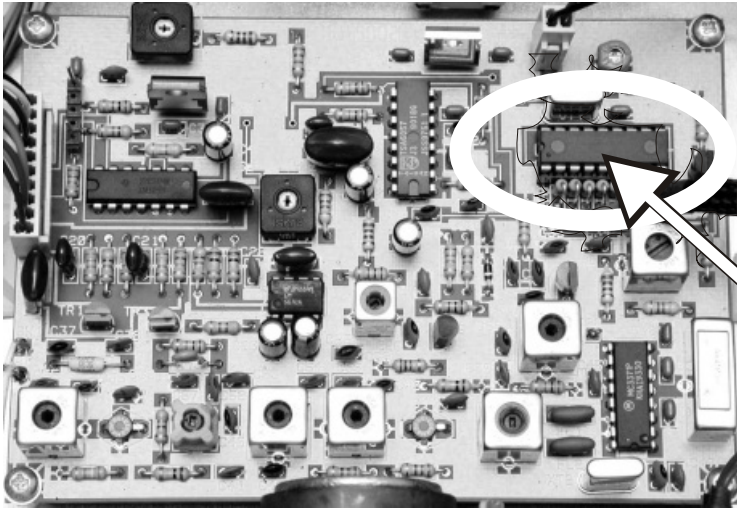
*Switch off your Rx2 before you start!
Discharge any static electricity by touching your finger
to an earthed object - radiator, tap (faucet) or similar.*



Group for Earth Observation

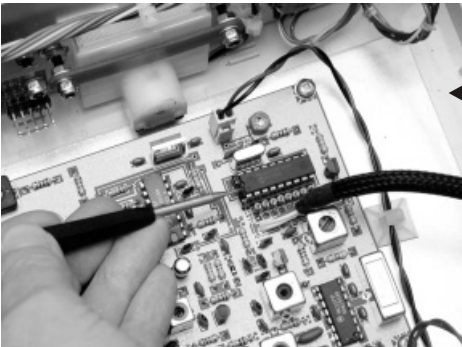
GEO PIC 1.0 Information

Channel 1 = 137.10 Mhz
Channel 2 = 137.40 Mhz
Channel 3 = 137.50 Mhz
Channel 4 = 137.62 Mhz
Channel 5 = 137.91 Mhz



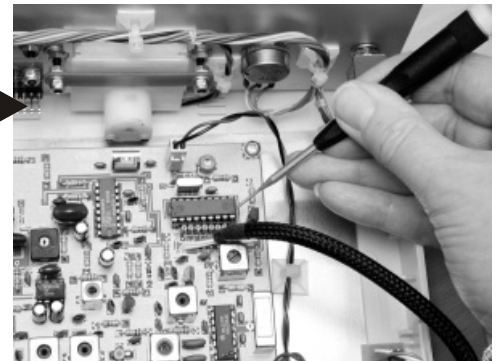
1. LOCATION

The PIC is IC6.
It is the only IC fitted into a socket



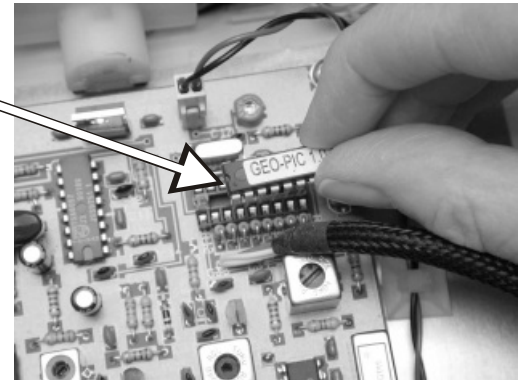
2. REMOVE OLD PIC

Carefully prise the old PIC from the socket with a small 'jewellers' screwdriver.



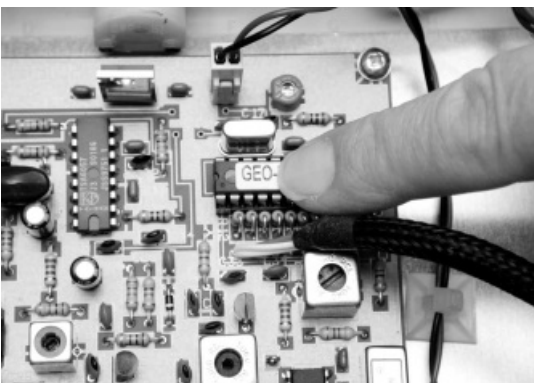
3. PLACE NEW PIC INTO SOCKET

NOTE orientation of label
and small dimple on PIC



Important!!

*Place PIC the correct way round.
Make sure PIC pins are not bent, and align correctly
with socket.*



4. PUSH HOME

Gently push the PIC into the socket. Check for any bent pins. If all looks correct, then re-apply power to your RX2 and wait for your first NOAA18 pass!

